

Čtvrť Emila Kolbena IV. etapa – budova KLM, sekce M
BM10412 2 + KK / 4.NP

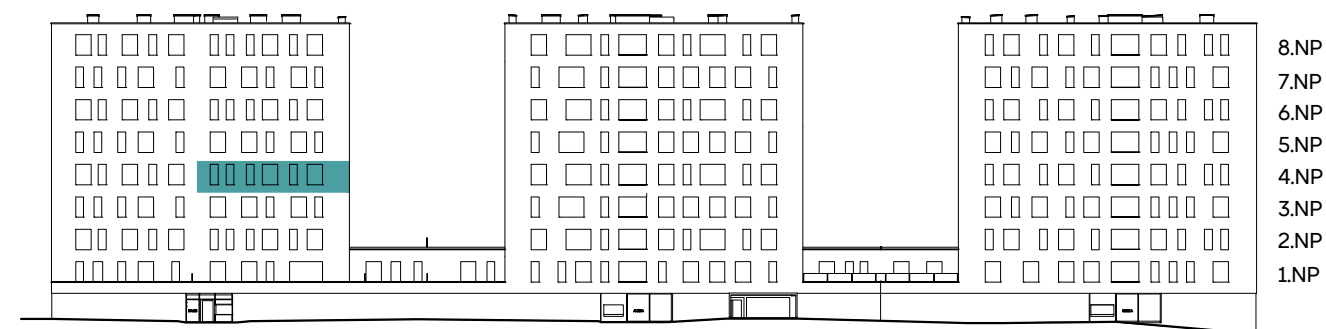
plocha dle NV č. 366/2013 Sb. 58,1 m²
užitná plocha celkem 55,7 m²
plocha lodžie 4,9 m²

Čtvrť Emila Kolbena

sekce M - Marie

sekce L - Albina

sekce K - Kamila



pohled severní

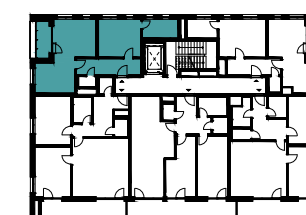
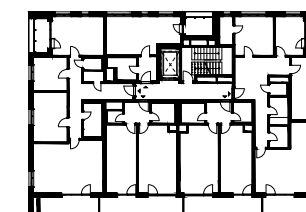
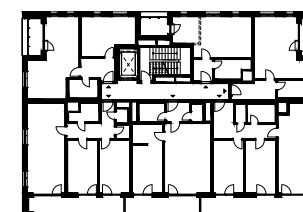
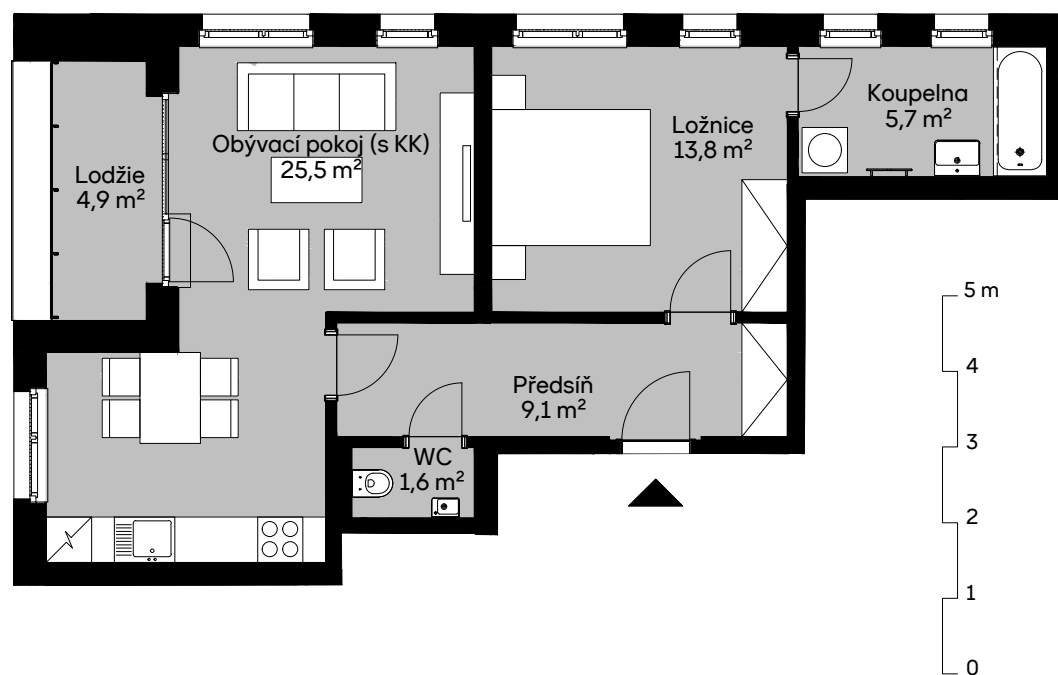
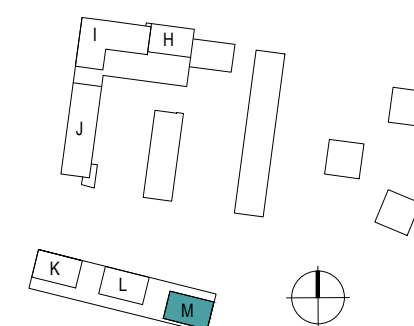


schéma podlaží



situace