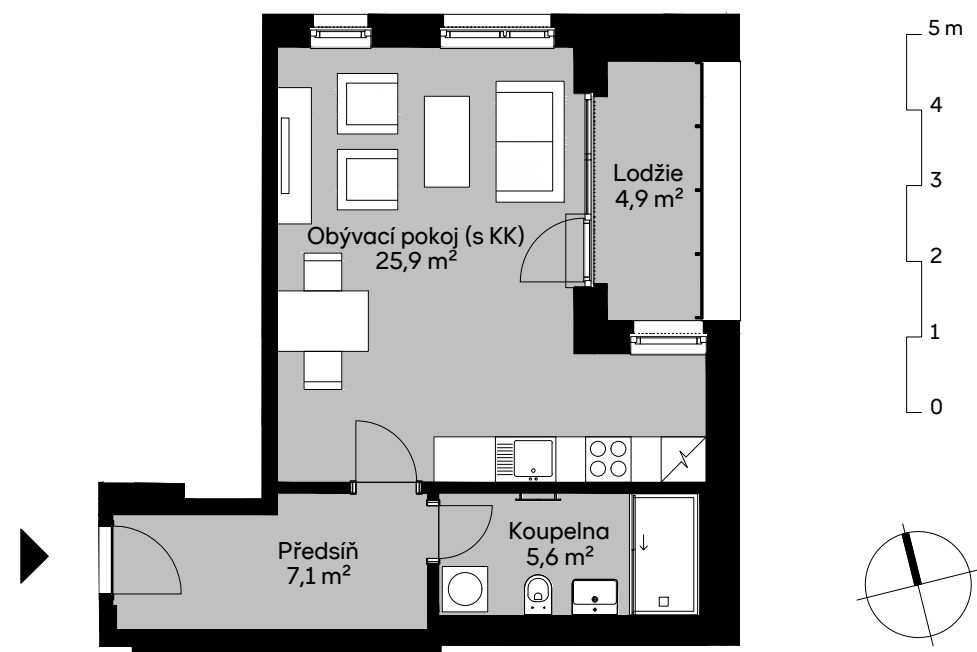


Čtvrť Emila Kolbena IV. etapa – budova KLM, sekce K
BK10703 1 + KK / 7.NP

plocha dle NV č. 366/2013 Sb. 39,4 m²
užitná plocha celkem 38,6 m²
plocha lodžie 4,9 m²

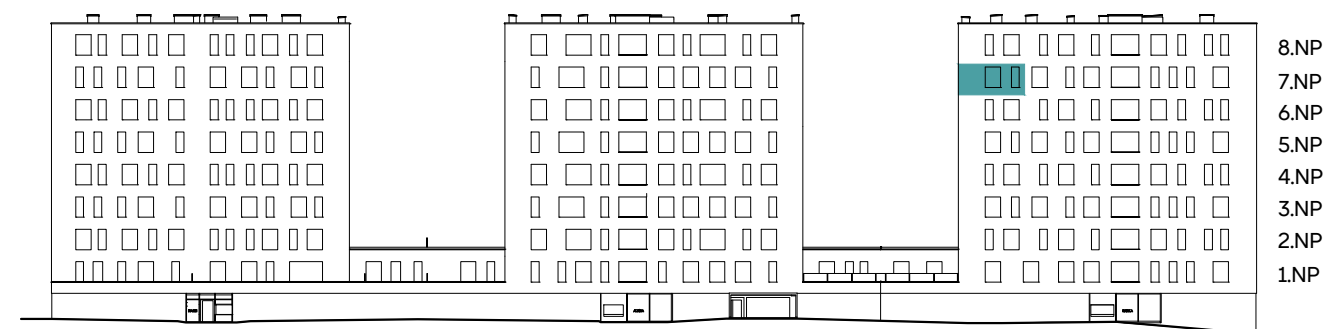


Čtvrť Emila Kolbena

sekce M - Marie

sekce L - Albina

sekce K - Kamila



pohled severní

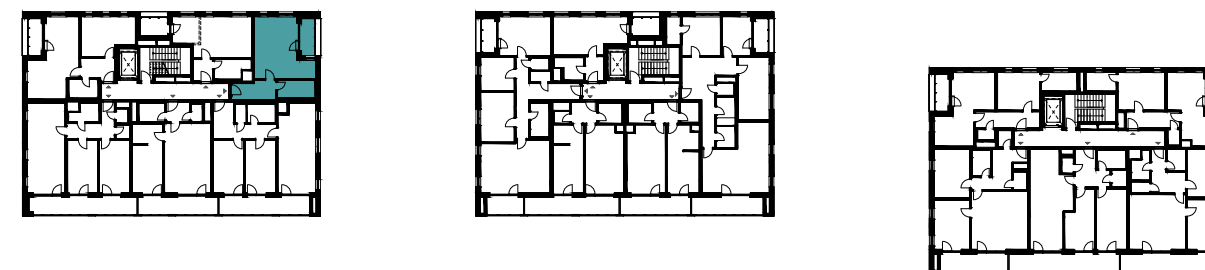
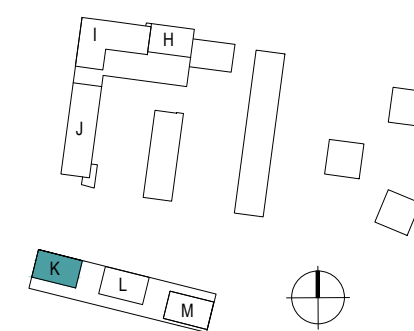


schéma podlaží



situace