

Čtvrť Emila Kolbena IV. etapa – budova KLM, sekce K
BK10501 2 + KK / 5.NP

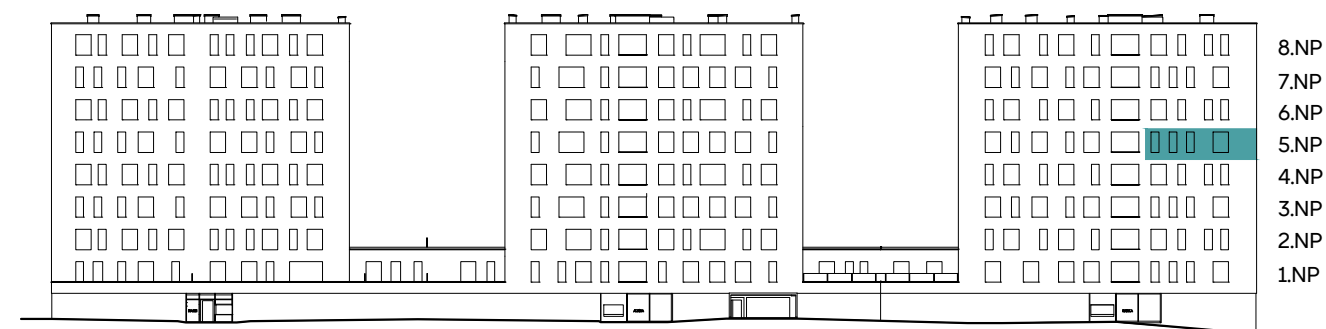
plocha dle NV č. 366/2013 Sb. 57,4 m²
užitná plocha celkem 55,2 m²
plocha lodžie 4,9 m²

Čtvrť Emila Kolbena

sekce M - Marie

sekce L - Albina

sekce K - Kamila



pohled severní

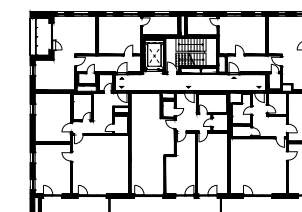
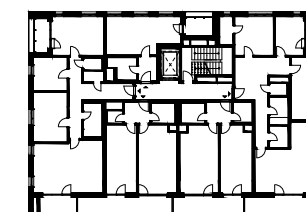
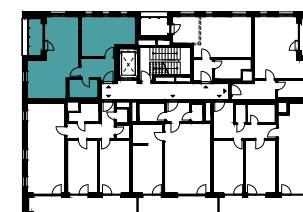
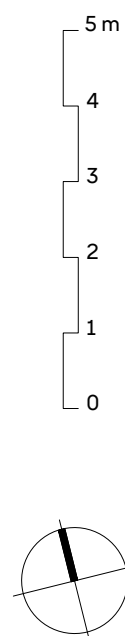
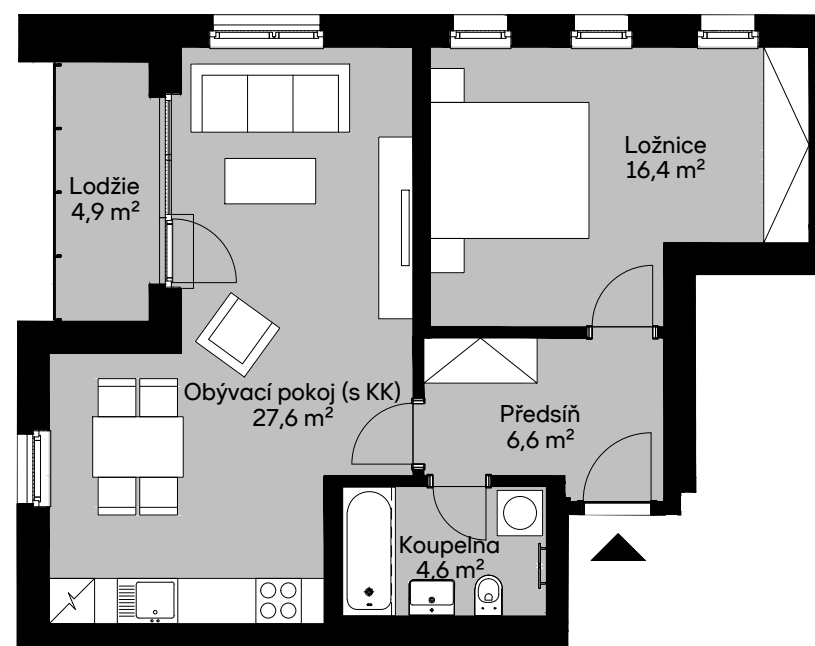
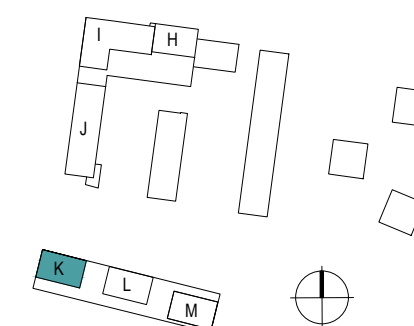


schéma podlaží



situace