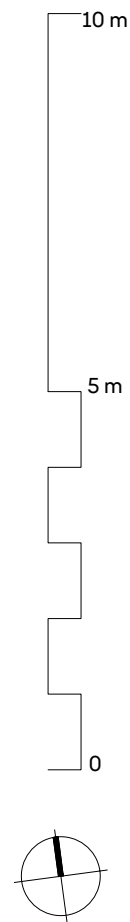
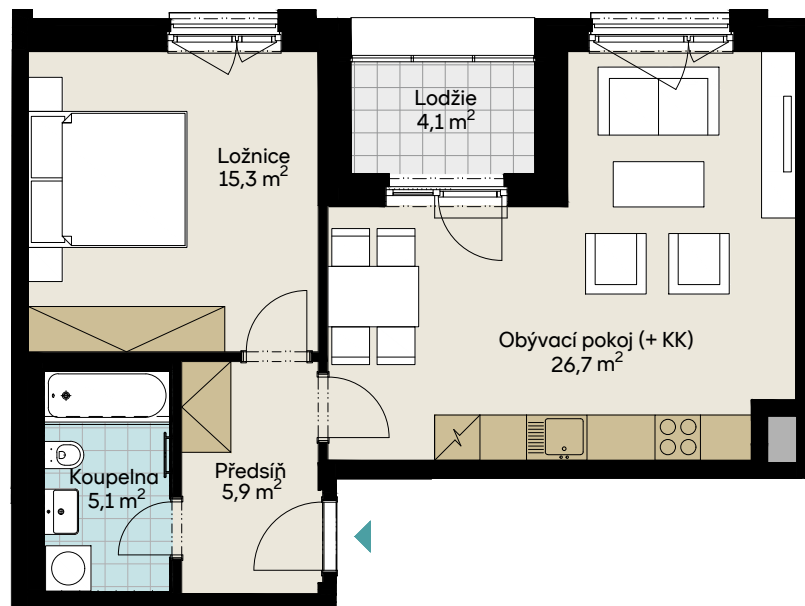


ČTVRŤ EMILA KOLBENA III – budova I  
BI10811

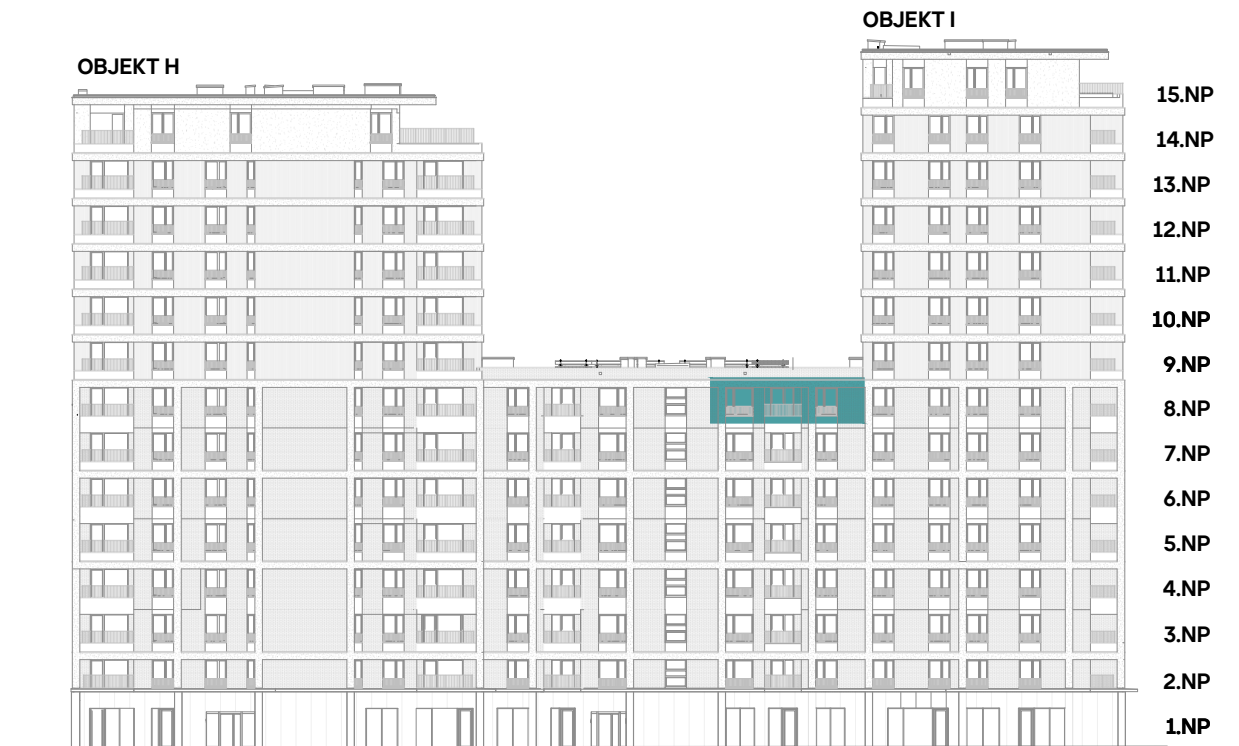
2 + KK / 8.NP

plocha dle NV č. 366/2013 Sb.  
užitná plocha celkem  
plocha lodžie

55,1 m<sup>2</sup>  
53,0 m<sup>2</sup>  
4,1 m<sup>2</sup>



# čtvrť emila kolbena



POHLED SEVERNÍ



PŮDORYS 8.NP

