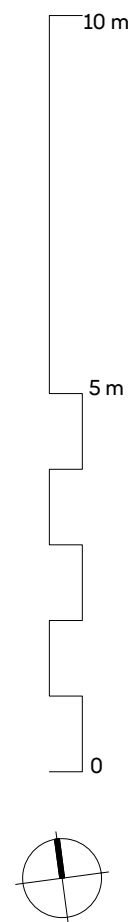
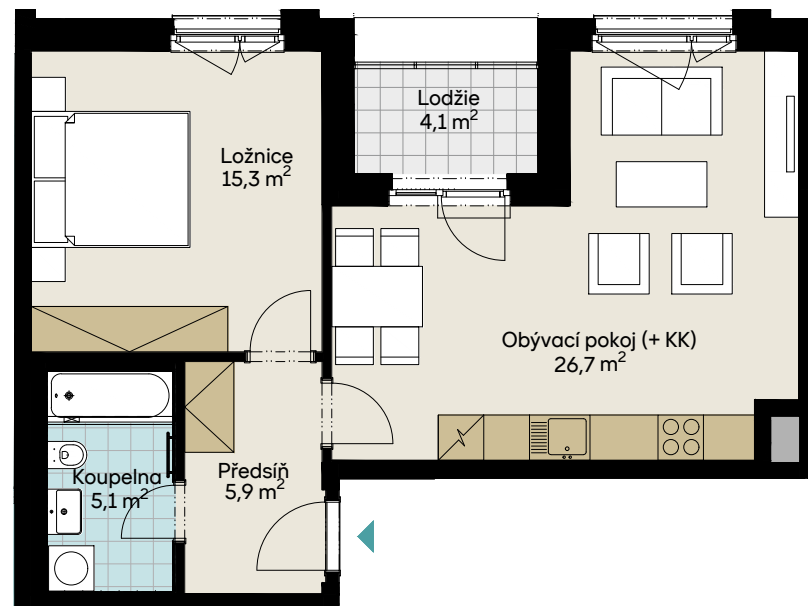


ČTVRŤ EMILA KOLBENA III – budova I
BI10211

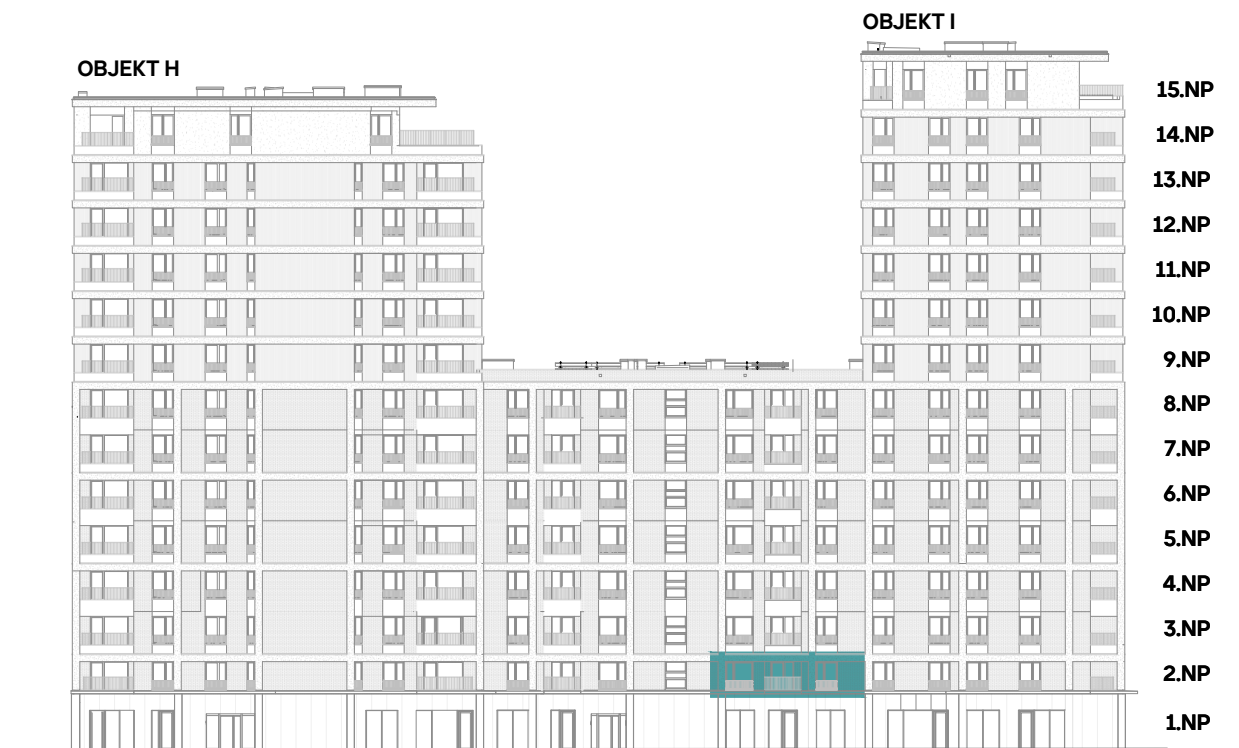
2 + KK / 2.NP

plocha dle NV č. 366/2013 Sb.
užitná plocha celkem
plocha lodžie

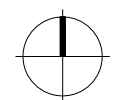
55,2 m²
53,0 m²
4,1 m²



čtvrť emila kolbena



POHLED SEVERNÍ



PŮDORYS 2.NP

