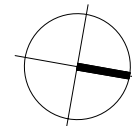
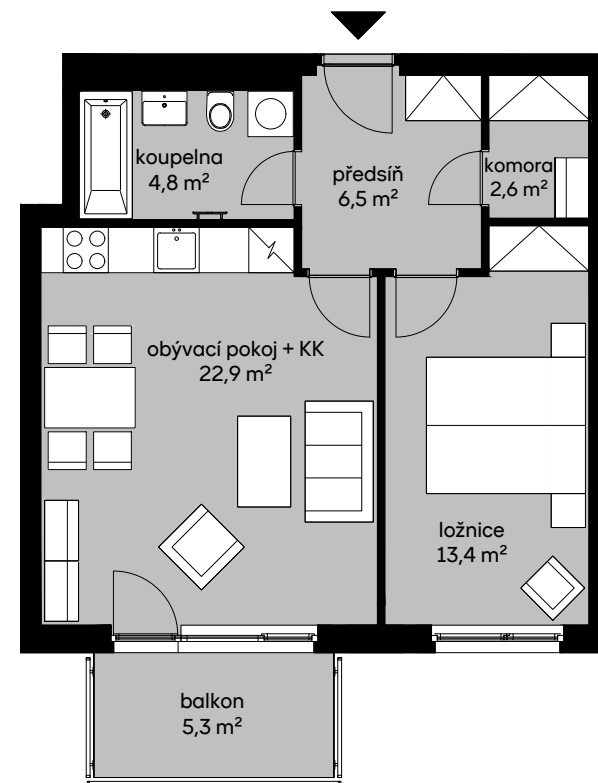


plocha dle NV č. 366/2013 Sb.  
užitná plocha celkem  
plocha balkonu

52,5 m<sup>2</sup>  
50,2 m<sup>2</sup>  
5,3 m<sup>2</sup>



5.NP  
4.NP  
3.NP  
2.NP  
1.NP  
1.PP

pohled východní

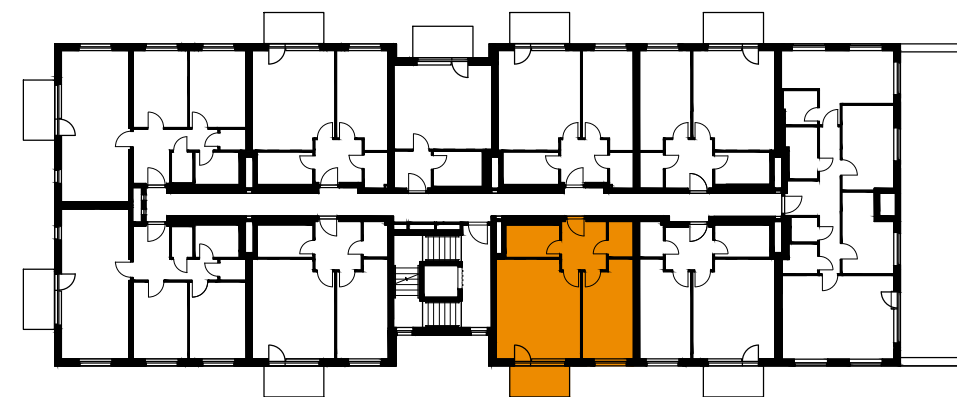


schéma podlaží