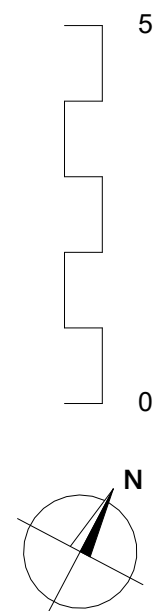
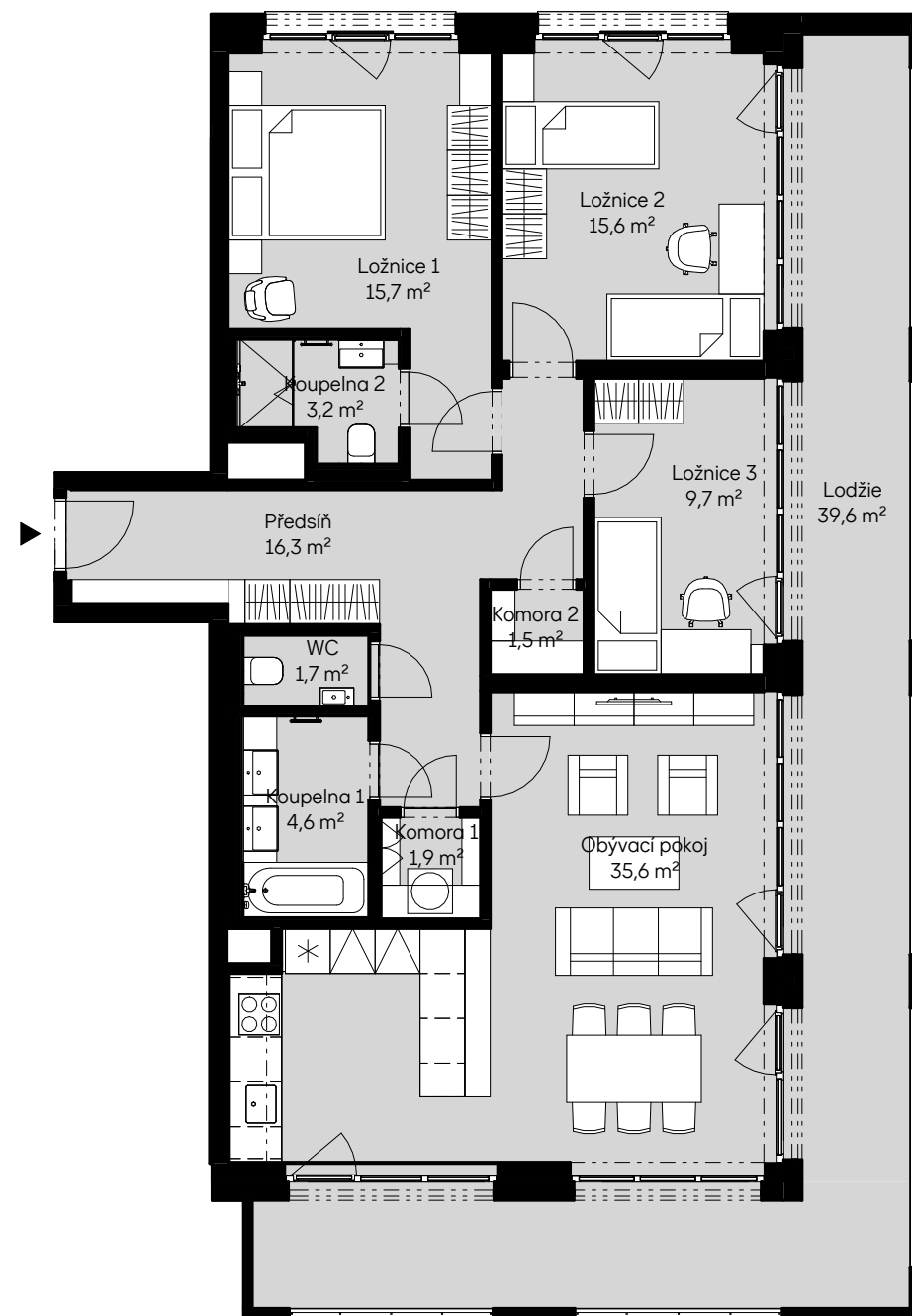


Bytové domy Radlická - ONYX  
BB23310 4 + KK / 3.NP

plocha dle NV č. 366/2013 SB.  
užitná plocha celkem  
plocha lodžie

113,1 m<sup>2</sup>  
105,8 m<sup>2</sup>  
39,6 m<sup>2</sup>



pohled východní

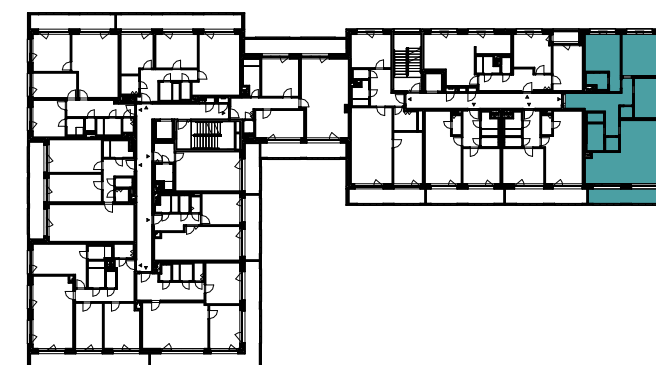
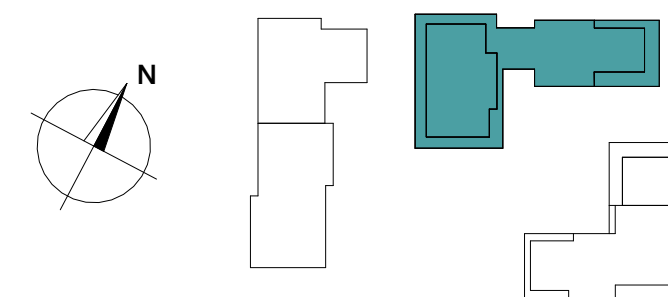


schéma podlaží



situace