

Bytové domy Radlická - ONYX  
BB21109 3 + KK / 1.NP

plocha dle NV č. 366/2013 SB.  
užitná plocha celkem  
plocha lodžie

79,7 m<sup>2</sup>  
75,4 m<sup>2</sup>  
3,5 m<sup>2</sup>



pohled severní

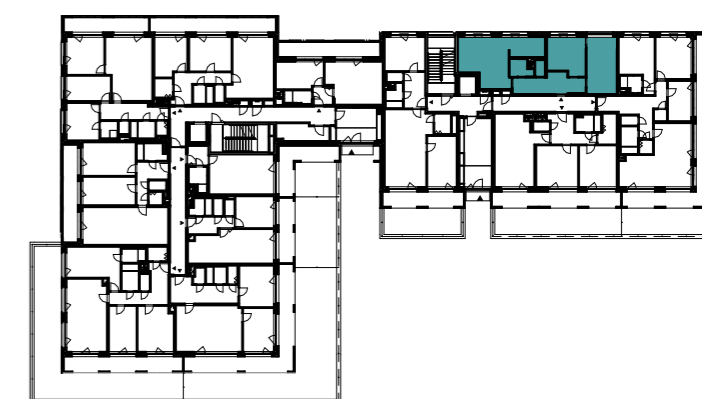
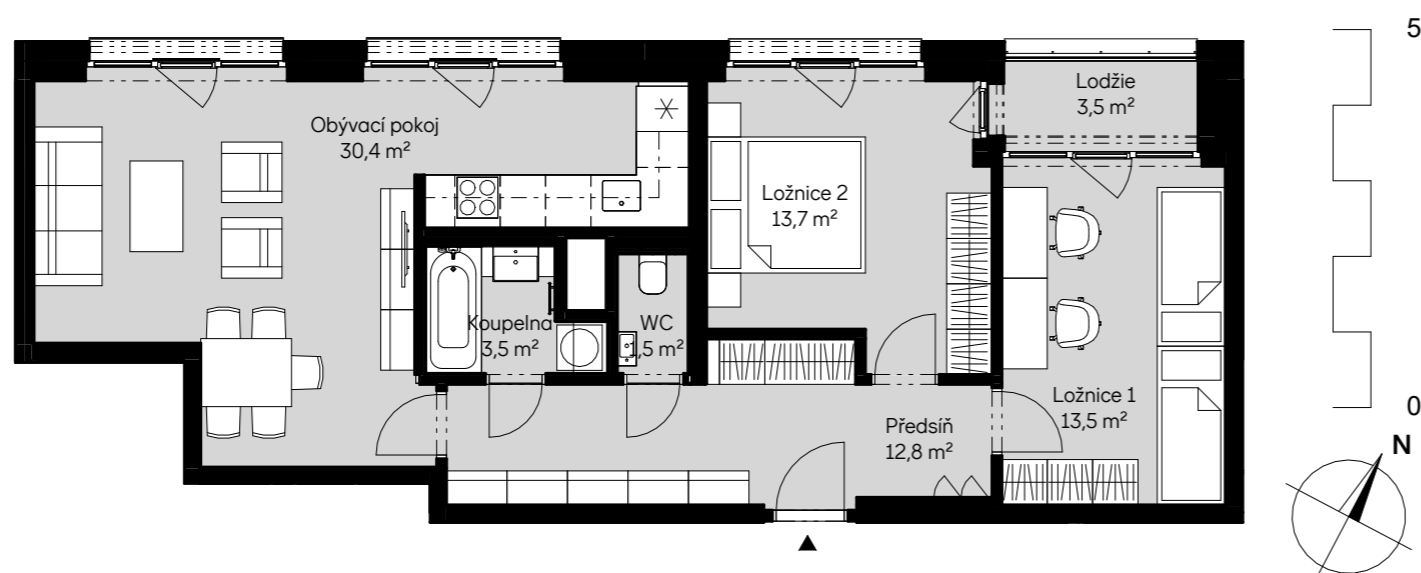
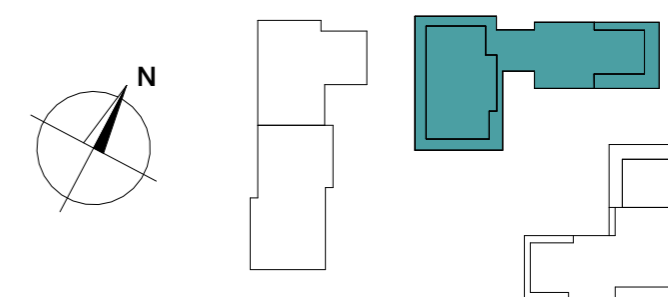


schéma podlaží



situace