

Bytové domy Radlická - DŘEVÁK  
BA23316 2 + KK / 3.NP

plocha dle NV č. 366/2013 SB.  
užitná plocha celkem  
plocha lodžie

54,8 m<sup>2</sup>  
52,1 m<sup>2</sup>  
11,2 m<sup>2</sup>



pohled západní

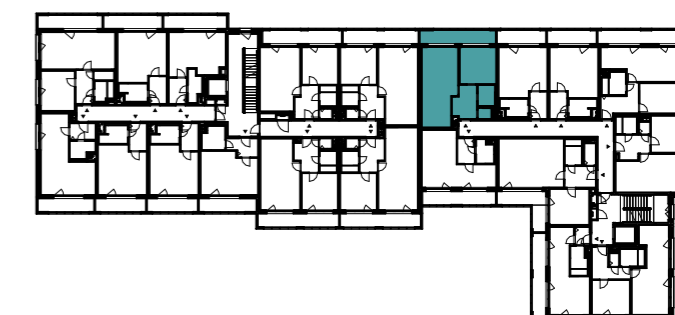
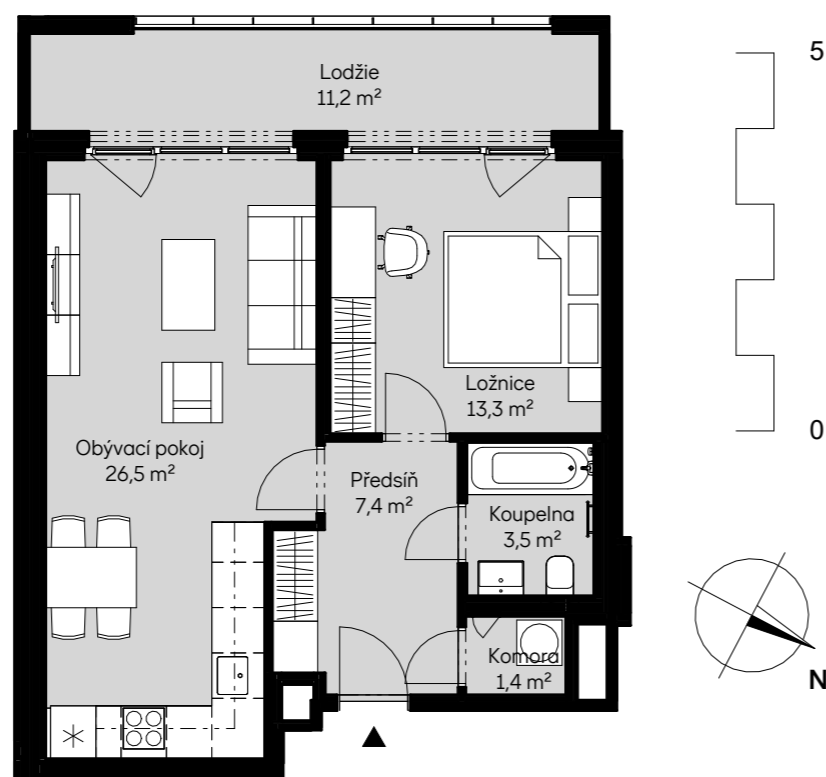
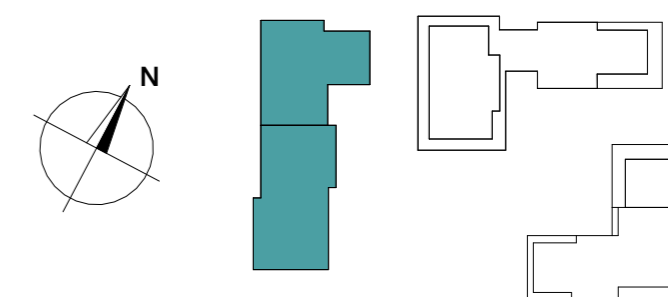


schéma podlaží



situace