

Čtvrť Emila Kolbena, 2.2 etapa

Alfred - budova A

BA20811

2 + KK / 8.NP

plocha dle NV č. 366/2013 Sb.

53,6 m²

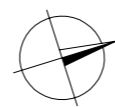
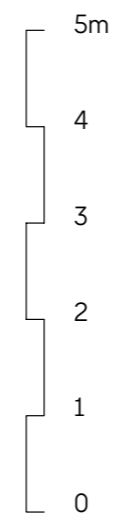
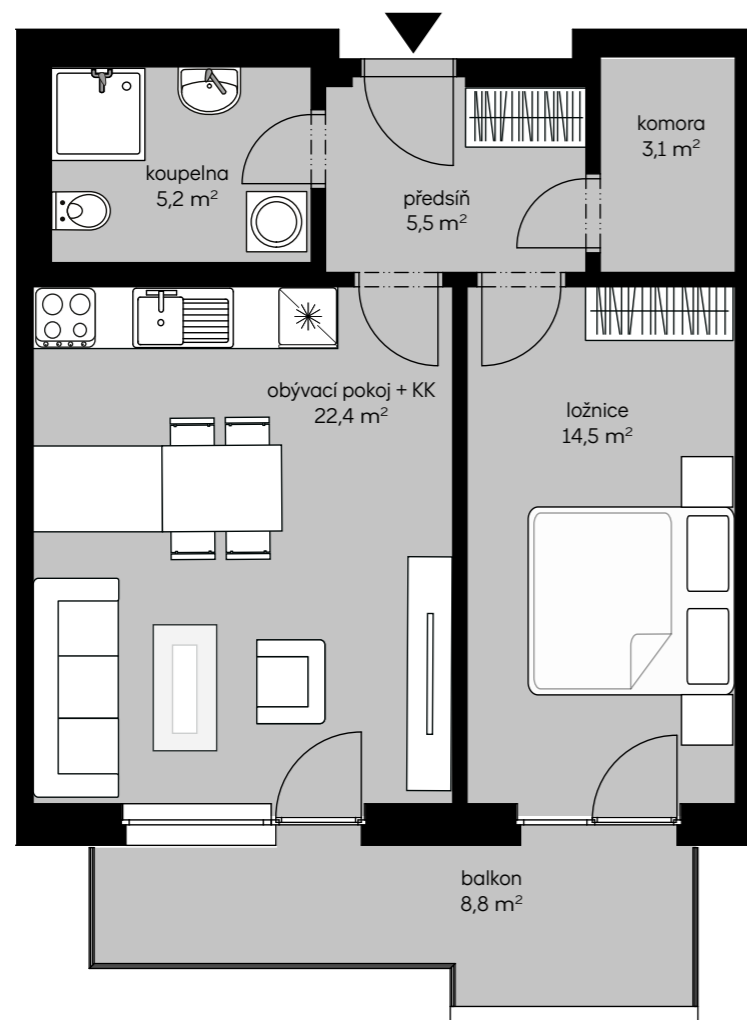
užitná plocha celkem

50,7 m²

plocha balkonu

8,8 m²

čtvrť emila kolbena



pohled východní

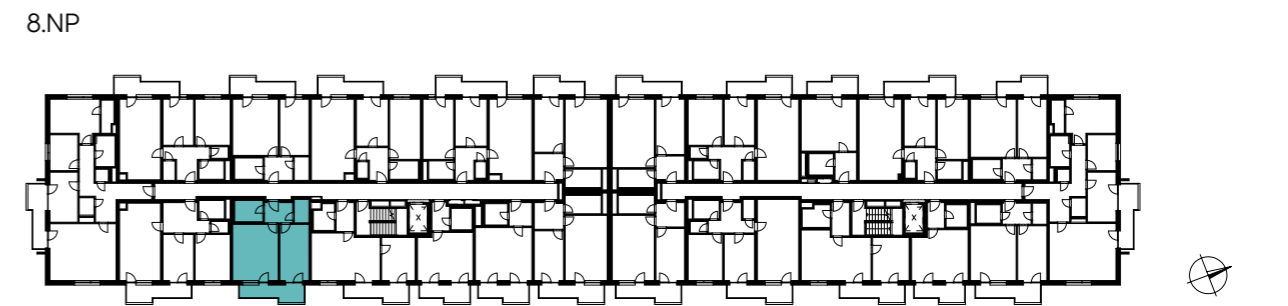


schéma podlaží