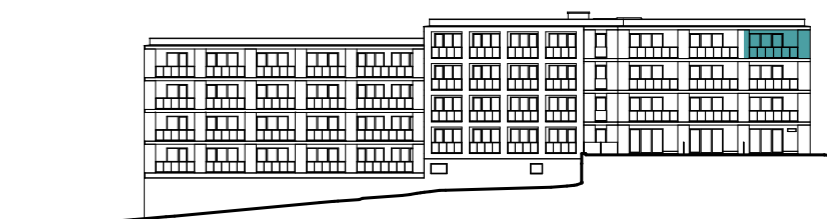


Bytové domy Radlická - DŘEVÁK  
BA14409 2 + KK / 4.NP

plocha dle NV č. 366/2013 SB.  
užitná plocha celkem  
plocha lodžie

55,0 m<sup>2</sup>  
52,4 m<sup>2</sup>  
9,4 m<sup>2</sup>



pohled západní

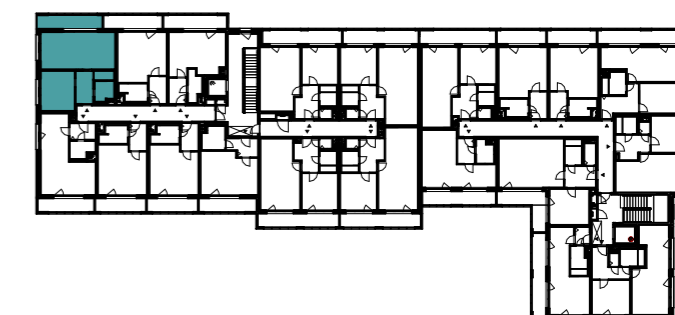
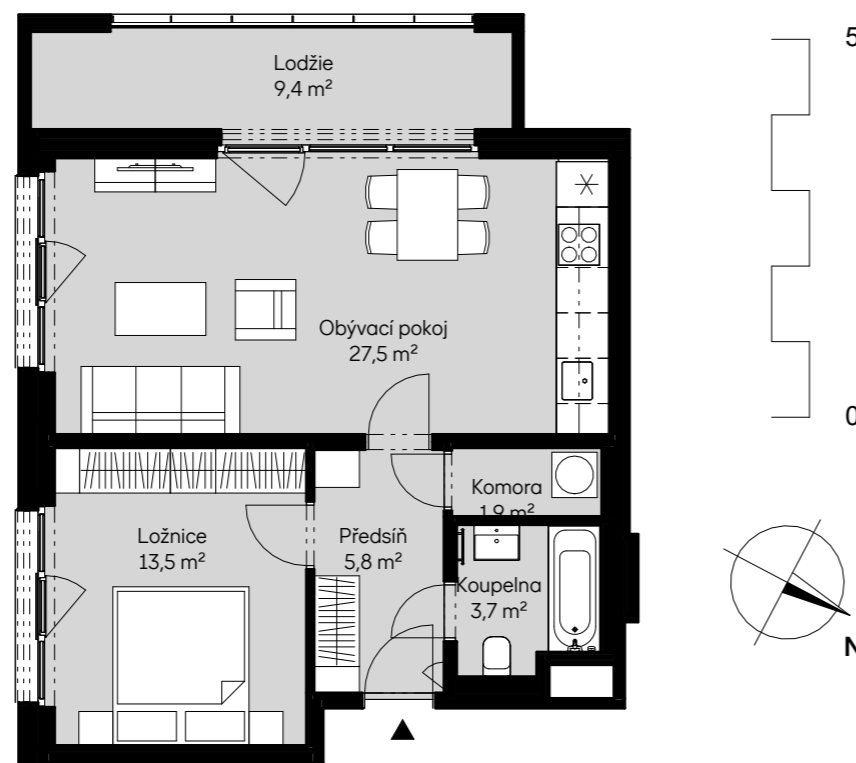
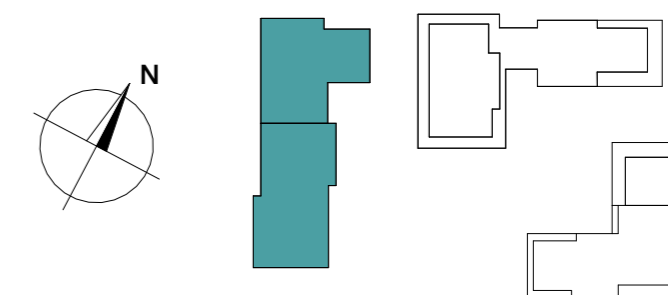


schéma podlaží



situace