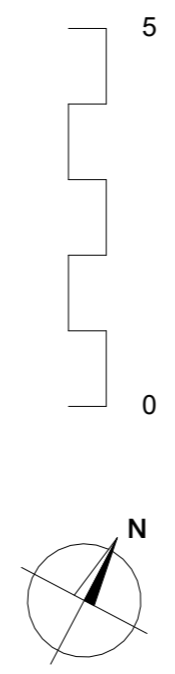
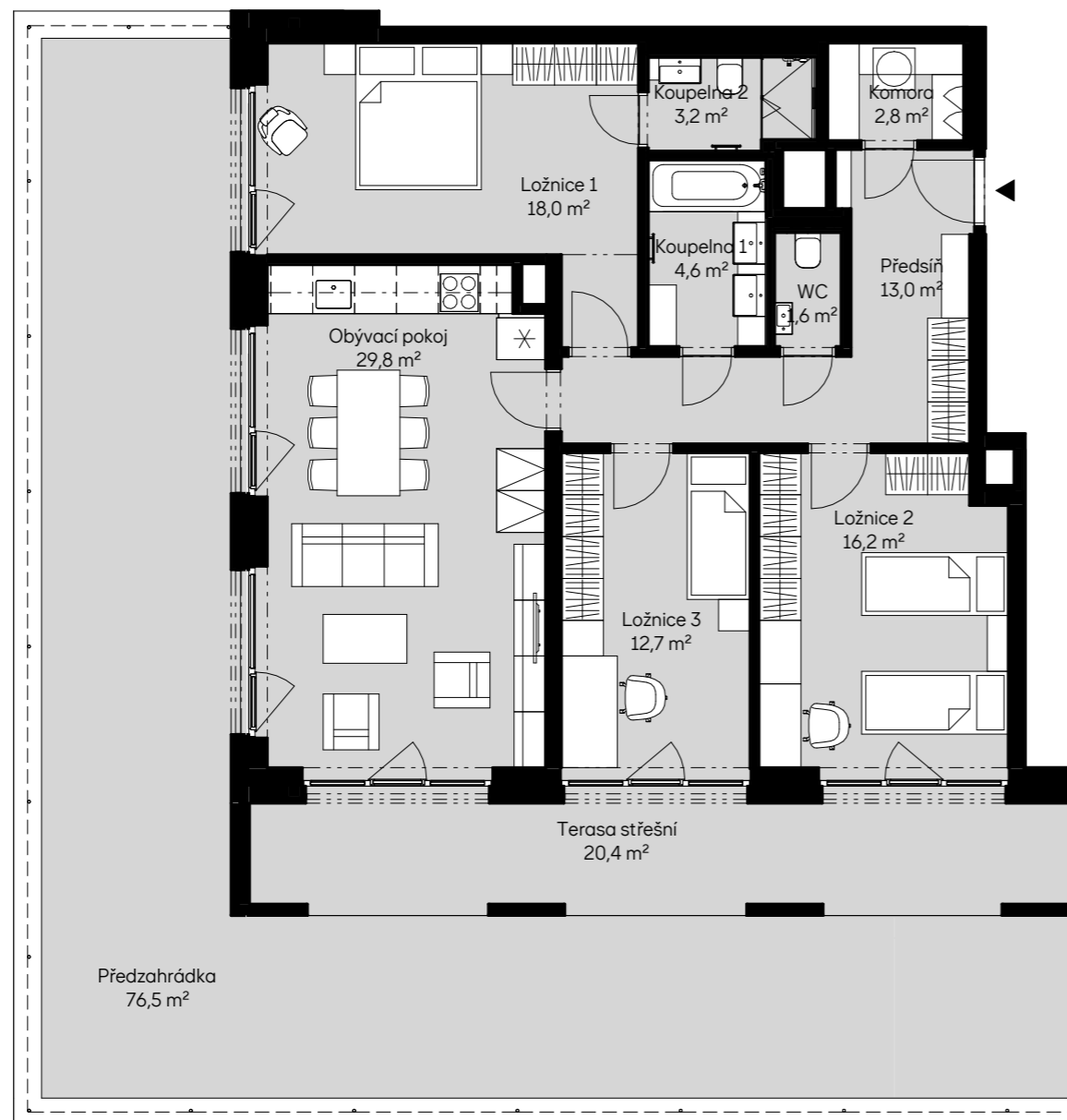


**Bytové domy Radlická - ONYX**  
**BB11104** 4 + KK / 1.NP



plocha dle NV č. 366/2013 SB. 108,8 m<sup>2</sup>  
 užitná plocha celkem 101,9 m<sup>2</sup>  
 plocha terasa / předzahrádka\* 96,9 m<sup>2</sup>



pohled jižní

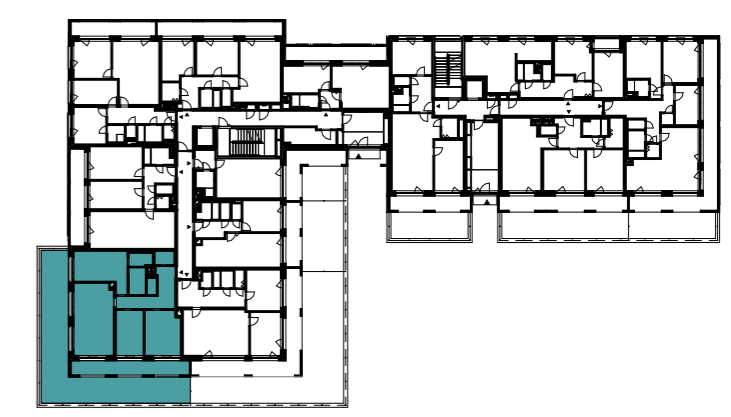
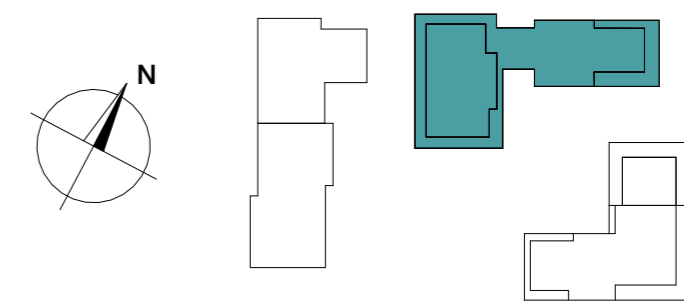


schéma podlaží



situace